

MONDAY

1. What is the time?



2. Halve 32.

3. XIV (Roman numeral) =

4. Which direction is this arrow pointing?

☐ left ☐ right



5. If yesterday was Monday what is tomorrow?

6. $1.5 + 2.5 =$

7. $19 + 9 =$

8. $45 - 9 =$

9. How many right angles are in a square?

10. $6^2 + 2^2 =$ + =

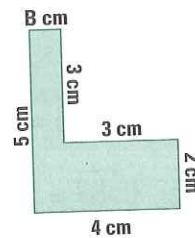
11. $6\frac{1}{2}$ m = cm

12. How many edges are on a cone?

13. $16.7 - 3.7 =$

14. B = cm

Perimeter = cm



15. $50 + 80 =$

16. 2, 7, 3, 8, 4, 9,

17. How many faces are on a pentagonal prism?

18. $4 \times 7 =$

19. $23 \div 5 =$ r

20. The shaded area = squares



TUESDAY

1. The time is five past

2. What is the 2-D shape?



3. $13 \div 2 =$ r

4. 99, 90, 81,

5. $12 - 7 =$

6. Round 649 (nearest 100).

7. How many days are in March?

8. If tomorrow is Friday, what day was yesterday?

9. $4^2 =$

10. $\$10.00 - \$5.50 =$

11. $4.3 + 9.2 =$

12. If the time is 8.10, what is the time in 40 minutes?

13. $46 + 34 =$

14. Write seven thousand and seventy-nine as a numeral.

15. How many edges are on a cube?

16. Draw a $\frac{1}{4}$ turn clockwise.



17. odd + odd =

18. $7 \times 8 =$

19. At the Holdforden car factory they took 3 working days to produce one car. How many working days does it take to build 10 cars?

20. $\$1.00 - 55c =$



WEDNESDAY

1. What is the time?



2. $\$2.50 + \$4.50 =$

3. $65 - 8 =$

4. Is this shape a polygon?



5. $4.3 + 1.5 =$

6. $0.4 = 4, 0.1$ or $\frac{4}{10}$?

7. Write a symmetrical letter.

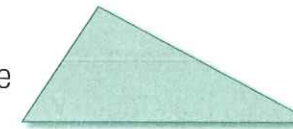
8. $4\overline{)92} =$

9. What 2 shapes make a triangular prism?

and

10. 1 year + 6 months = months

11. Mark as a scalene triangle.



12. Is 100 odd or even?

13. $800 - 170 =$

14. $7 \times 6 =$

15. What is the meaning of 4 in 4910?

16. What is the date a week before Christmas day?

17. 9, 19, 29, 39,

18. A race car took 2 minutes to complete 6 km. How many kilometres will it travel after 10 minutes?

19. $800 + 500 + 600 =$

20. Below is a fuel gauge. How much fuel is left in the tank?

☐ $\frac{1}{4}$ ☐ $\frac{1}{2}$ ☐ $\frac{3}{4}$



THURSDAY

1. The time is five past

2. What 2 shapes make a cylinder?

and

3. $1.5 + 0.5 =$

4. Is a prism 2-D or 3-D?

5. $700 - 200 =$

6. $15 + 45 =$

7. Write zero point seven one as a numeral.

8. $8 \times 9 =$

9. Measure the line AB.

cm



10. What is the difference between 14 and 8?

11. $30 + 80 =$

12. If you walked 3 km in 30 minutes, how far would you walk in an hour?

km

13. Share 64 crayons between 8 boys. How many each?

14. Draw a reflection.



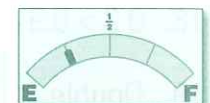
15. Name this shape.



16. Write the number sentence for Question 13?

$\div =$

17. How much is left in the tank?



18. How much of the tank has been used?

19. $6 + 8 =$

20. $14 - 7 =$

